



# BUSD WORKFORCE HOUSING

## Preconstruction Community Info Session

### 06.03.2025



**SAHA**  
SATELLITE  
AFFORDABLE  
HOUSING  
ASSOCIATES



# HOUSEKEEPING & ZOOM REMINDERS

- Welcome!
- Meeting will be recorded and posted to website at [1701sanpablo.org](http://1701sanpablo.org)
- Audience members are on mute.
- Audience members can ask a question at any time by typing it into the Q&A box. We will begin our Q&A after a brief presentation.
- We will document today's FAQ's and post it on our website.



**SAHA**  
SATELLITE  
AFFORDABLE  
HOUSING  
ASSOCIATES



# AGENDA

1. Introductions to Development & Construction Team
2. Development overview
3. Construction Schedule
4. Construction Updates & Logistics
5. Questions & Answers



# Introductions

## Developers:

- Satellite Affordable Housing Associates (SAHA)
  - Eve Stewart, Shanti Jensen
- Abode Communities
  - Paige Dow, Ashiyr Pierson

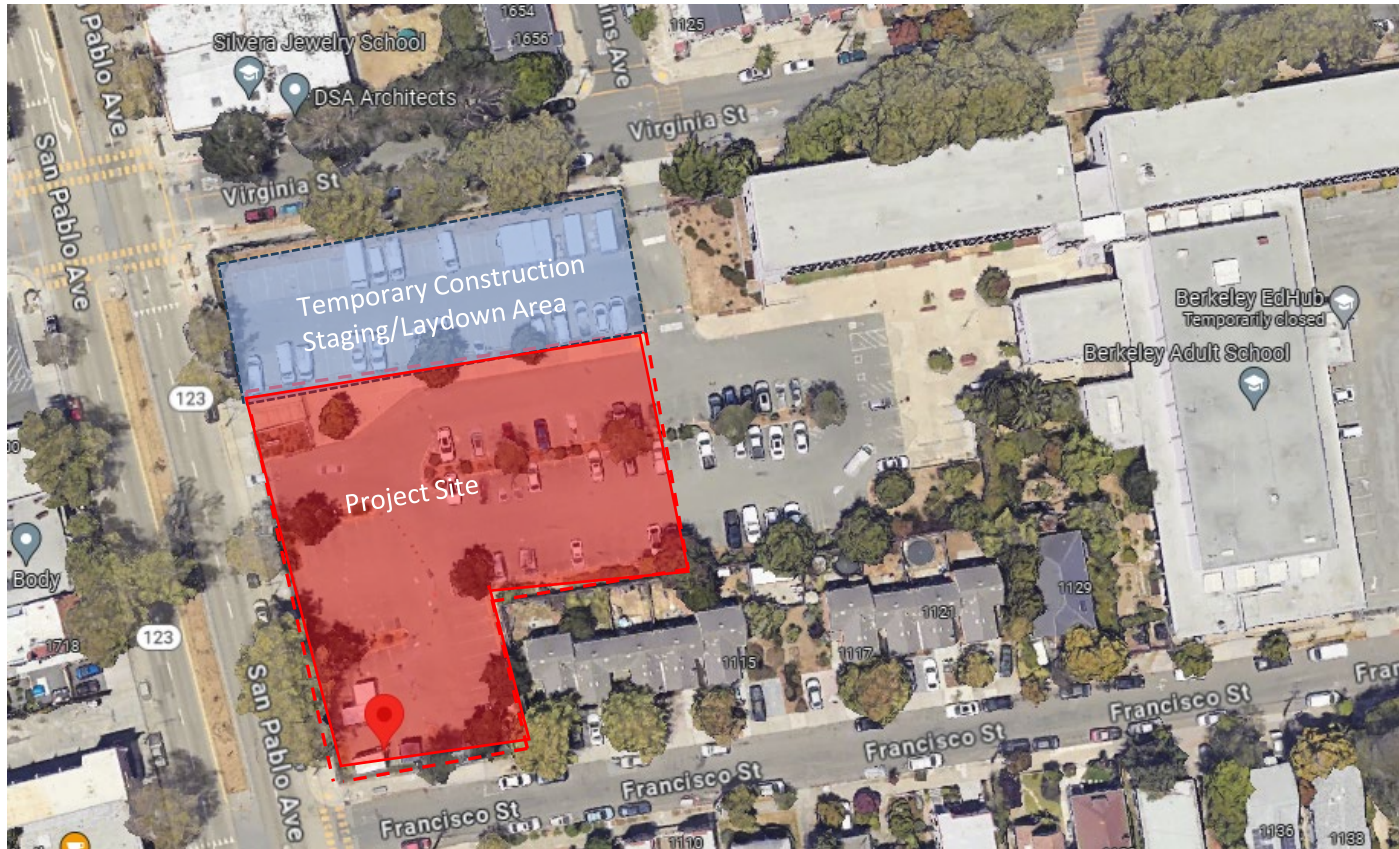
## Contractor:

- James E. Roberts-Obayashi Corporation
  - Jason Olsen, Meagan Rice, Sayed Ahmadi





# Project Site



**SAHA**  
SATELLITE  
AFFORDABLE  
HOUSING  
ASSOCIATES





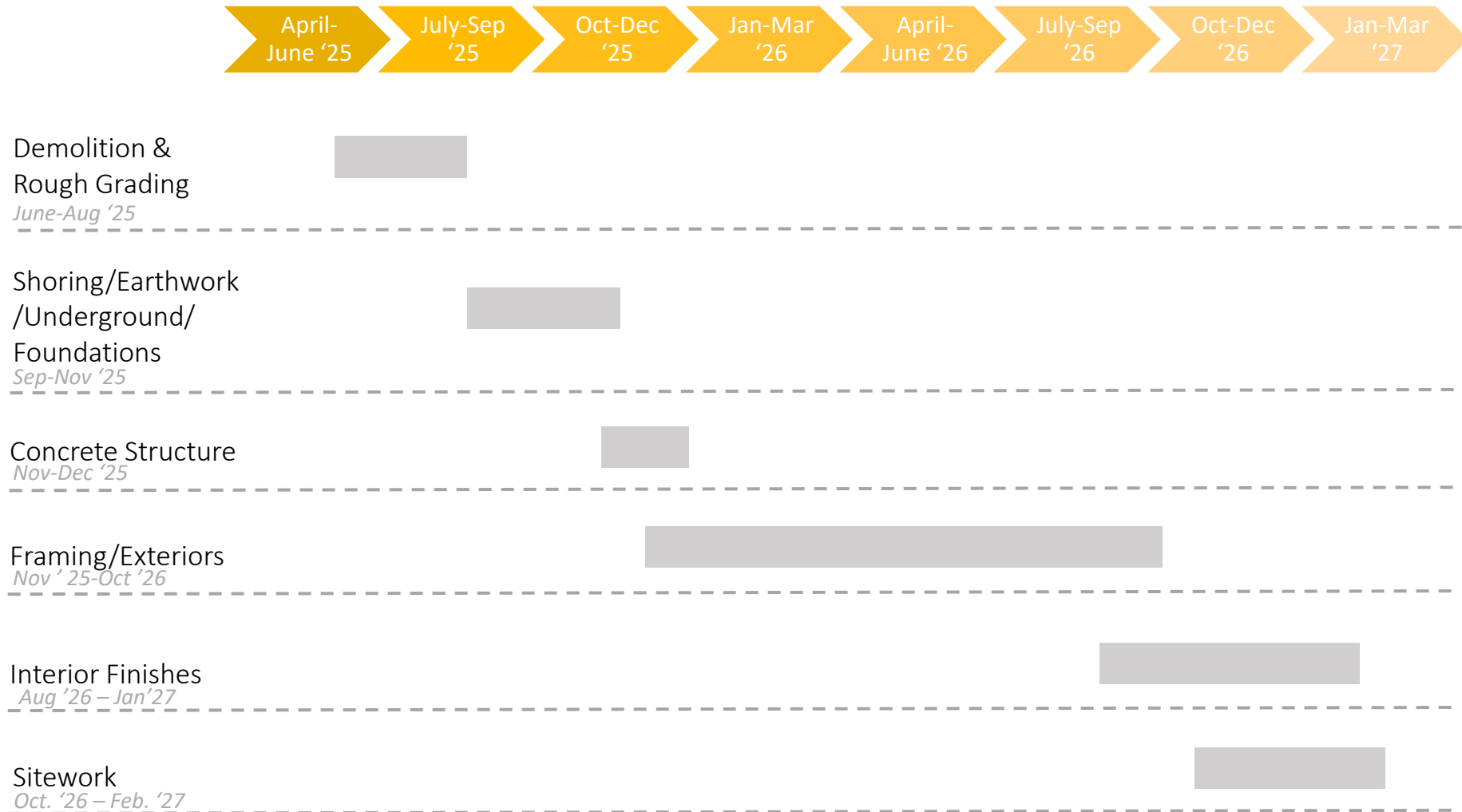
# Renderings



**SAHA**  
SATELLITE  
AFFORDABLE  
HOUSING  
ASSOCIATES



# Construction Schedule

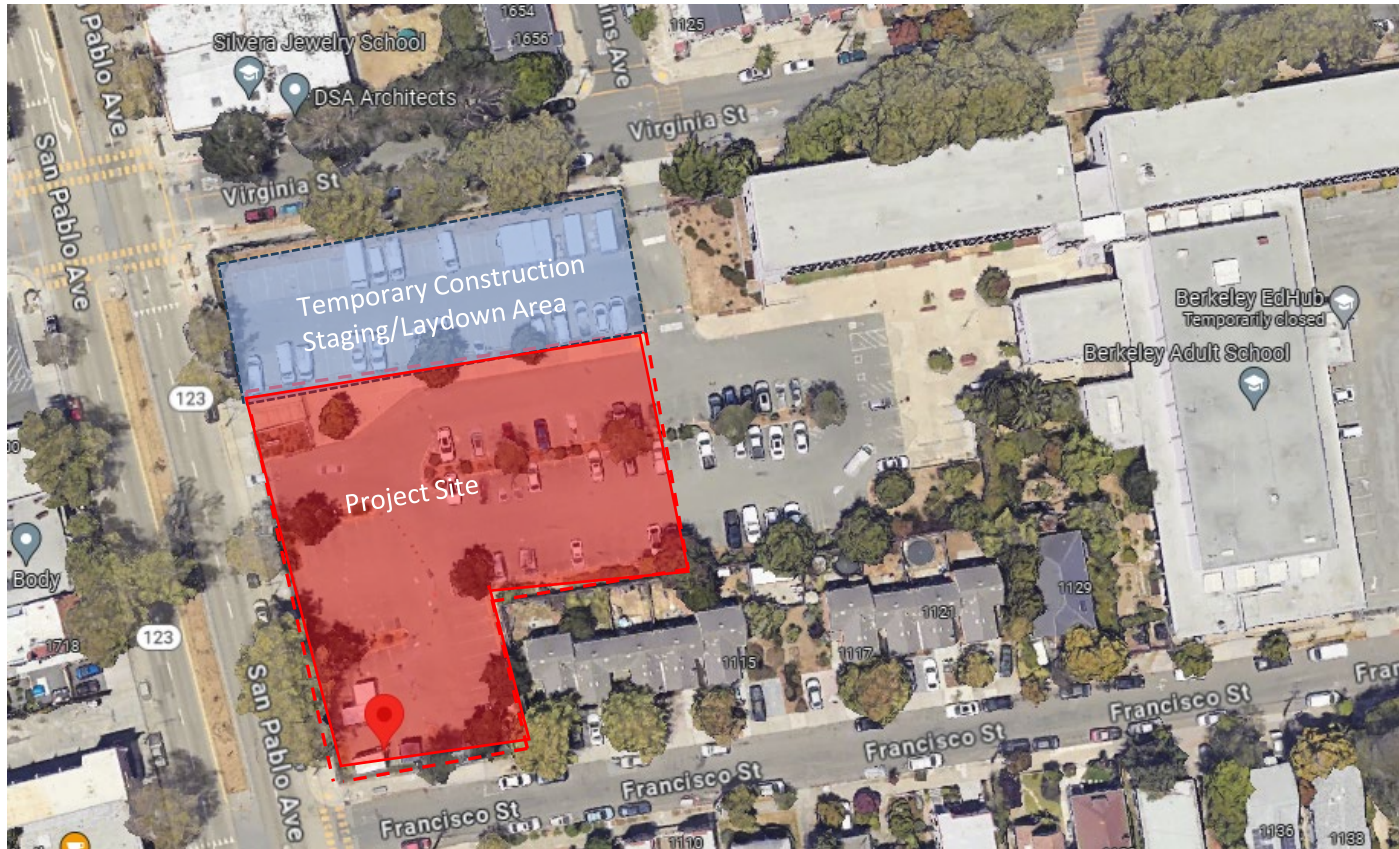


**SAHA**  
SATELLITE  
AFFORDABLE  
HOUSING  
ASSOCIATES





# Construction Logistics



**SAHA**  
SATELLITE  
AFFORDABLE  
HOUSING  
ASSOCIATES





# Construction Logistics

**Hours:** Permitted work hours 8:00 AM – 6:00 PM Mon-Fri, and 9:00 AM – 12:00 PM Saturdays. Any work outside of these hours requires permission from City, including minimum 2-week notice to neighbors.

**Site Security:** Surveillance cameras with remote monitoring.

**Site Safety:** Entire site will be enclosed with a fence.

**Noise Mitigation:** Sound wall bordering school and neighbors on Francisco St.



# Construction Logistics (cont.)

## Street/Lane/Sidewalk Closures:

- Parking closures along San Pablo throughout duration, temporary closures on Francisco/Virginia as-needed.
- Temporary lane and sidewalk closures if needed on San Pablo for major deliveries (e.g. lumber, concrete pour, etc.)
- Check website for up-to-date information!

**Loading/Unloading:** Will take place along San Pablo.



**SAHA**  
SATELLITE  
AFFORDABLE  
HOUSING  
ASSOCIATES



# Contact Information

**Construction Questions:** For questions related to construction of the housing development, please contact

Jason Olsen, Superintendent

(888) 302-4304, [Jasono@jerocorp.com](mailto:Jasono@jerocorp.com)

**School District Questions:** For questions related to school operations, please contact

[facilities@berkeley.net](mailto:facilities@berkeley.net)

**Project Info/Developer Contact:** For other project info, please refer to our website

[1701sanpablo.org](http://1701sanpablo.org)

Shanti Jensen, Project Manager, [sjensen@sahahomes.org](mailto:sjensen@sahahomes.org)



# Questions??

Please enter in the Q&A or raise hand if calling in.

